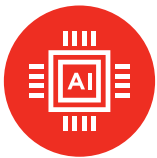


Lenovo Yoga 7i 2-in-1 (16", 10)

Flex Your Creativity with 360° Design and AI Power

Create anywhere with the Yoga 7i 2-in-1. Its 360° design, touchscreen, and optional Yoga Pen let you sketch, edit, or present like a pro. Powered by Intel® Core™ Ultra 7 Evo Edition and a 40+ TOPS NPU, this Copilot+ PC balances power and efficiency. The 16" PureSight OLED display with up to 120Hz refresh and Dolby Vision delivers stunning visuals.



Flip, Create, and Collaborate Your Way

Adapt to any situation with the Yoga 7i 2-in-1. Its 360° design flips between laptop, tablet, and tent modes, perfect for sketching, editing, or presenting. The responsive touchscreen and Yoga Pen, with tilt and pressure detection, give you seamless control for all your creative moves.



Power Smart, Stay Charged, Keep Creating

Keep your hustle going longer with Intel® Core™ Ultra processors and Lenovo's AI Core, which smartly manages energy based on what you're doing. Max out battery life without sacrificing power. With a 70Wh battery and Rapid Charge Express, 15 minutes of charging gives you 3 hours of juice, keeping you in the game without the wait.



Smarter, Faster AI Tools

Step into the future of AI-powered performance. With Intel® Core™ Ultra 7 series processors, the Yoga 7 series runs smoothly and adapts to your flow. Add fuel to your creativity with Microsoft Copilot and Lenovo Smart Note. Whether you're tackling projects or bringing ideas to life, this PC is built to keep up.



See the Difference with PureSight OLED

Get ready for epic visuals with up to PureSight OLED display—sharp 2880 x 1800 resolution, 1,100 nits peak brightness, 99% Adobe RGB, and a buttery 120Hz refresh rate. Colors pop with pro-level accuracy thanks to 100% DCI-P3 and Dolby Vision, while TÜV HW Low Blue Light tech keeps your eyes chill. It's all about unprecedented clarity, bold colors, and smooth visuals.



Lenovo Yoga 7i 2-in-1 (16", 10)

SPECIFICATIONS

YOGA 7 2-IN-1 16ILL10

PERFORMANCE

Processor

Intel® Core™ Ultra 7 258V
Intel® Core™ Ultra 7 256V
Intel® Core™ Ultra 5 228V
Intel® Core™ Ultra 5 226V

Operating System

Windows 11 Home
Windows 11 Pro

Graphics

UMA: Intel® Arc™

Memory

LPDDR5X : 16 GB / 32 GB; 8533MHz Dual Channel

Storage

PCIe SSD Gen 4 M.2: 512G/1TB

Camera & Microphone

FHD IR Camera with RGB / 5M IR Camera
Camera Shutter
4 X 3D noise-canceling mics

Audio

4 x 2W Speakers
With Dolby Atmos® Audio

Battery¹

70WHr

Movie Playback:

WUXGA LCD: Up to 26.5 hrs
2.8K OLED: Up to 19.5 hrs

Web Browsing :

WUXGA LCD: Up to 15.0 hrs
2.8K OLED: Up to 12.5 hrs

Battclues2.0:

WUXGA LCD: Up to 9.5 hrs
2.8K OLED: Up to 8.5 hrs

Rapid Charge Express : 15 minutes

WUXGA LCD: Up to 5.5 hrs
2.8K OLED: Up to 3.5 hrs

DESIGN

Display

16" 2.8K (2880 x 1800) 120Hz, 16:10,
PureSight, WQXGA OLED, 1100 nits
peak, 100% sRGB, 100% P3, 99% Adobe
RGB, Dolby Vision®, TÜV Low Blue Light
Certification, Glass, 10-point Multi-Touch

16" WUXGA LCD (1920 x 1200) 60Hz, 16:10,
300 nits, 45%NTSC Dolby Vision®, TÜV
Low Blue Light Certification, Glass, 10-point
Multi-Touch

4-Side Narrow Bezel (89.52% AAR)

Top: 5.6mm
Left/ Right: 2.7mm
Bottom: 14.12mm

Dimensions (W x D x H)²

(mm) : 3361x 257 x as thin as 15.85mm
(inches) : 14.21" x 10.11" x as thin as 0.62"

Weight

WUXGA : Starting at 1.77kg

Hinge

360°

CONNECTIVITY

WLAN

Wi Fi 7

Bluetooth³

Bluetooth³ 5.4

Input/Output (I/O) Ports⁴

- 1x USB-A (USB 5Gbps / USB 3.2 Gen 1), Always On
- 2x USB-C⁵ (Thunderbolt™ 4 / USB4⁵ 40Gbps), with USB PD 3.0 and DisplayPort™ 2.1
- 1x HDMI⁵ 1.4b
- 1x Headphone / microphone combo jack (3.5mm)
- 1x microSD card reader

PRELOADED SOFTWARE

- Windows 11 Home/Pro
- Lenovo Vantage
- Microsoft 365 Trial
- McAfee® LiveSafe™
- Dolby® Access (Dolby Vision® and Atmos®)
- Smart Note
- Lenovo AI Now

NOTEABLE MENTIONS

- MIL-STD-810H
- Carbon Neutral Certified
- EPEAT® Gold-registered
- Energy Star 8.0
- 100% Plastic Free Packaging
- FPR (optional)

¹ All battery life claims are approximate and based on two methods of testing: continuous Local Video Playback and Web Browsing @ 150 nits brightness on the latest update of Windows 11. Actual battery life will vary and depends on many factors such as product configuration and usage, software use, wireless functionality, power management settings, and screen brightness. The maximum capacity of the battery will decrease with time and use.

² Height is calculated using T2 measurements and should be considered 'as thin as'.

³ The actual transfer speed of the USB 3.2 will vary and, depending on many factors, such as the processing capability of host and peripheral devices, file attributes and other factors related to system configuration and your operating environments, may be slower than a speed of 20 Gbit/s.

⁴ EPEAT-registered where applicable - see www.epeat.net for registration status by country.

⁵ The transfer speed of the ports will vary and, depending on many factors, such as the processing speed of the host device, file attributes and other factors related to system configuration and your operating environment, will be slower than theoretical speed.

LENOVO SERVICES

Lenovo Premium Care Plus

Lenovo Premium Care Plus is the ultimate PC support experience with you as our priority 24/7. Enjoy personalized hardware and software support from a global network of elite technicians, along with accidental damage protection, fast repairs with onsite support, extended battery warranty, data migration assistance, and smart performance solutions that optimize PC performance and security.

Lenovo Smart Performance

Smart Performance Services within Lenovo Vantage will keep your system running at optimum performance and proactively fix issues that affect PC performance, internet performance, remove malware, and improve device security.

Lenovo Accidental Damage Protection

Avoid the hassles of unexpected damage & repair costs. With coverage for drops, spills, electric surges, and broken LCD screens, accidental damage protection makes it easy to repair to your PCs and ensures your device is up and running fast.

Lenovo CO₂ Offset Services

Offset the carbon emissions of your PC with Lenovo CO₂ Offset Services - an easy and transparent solution to offset emissions across the average lifecycle of your device. These offsets are invested in UN-approved initiatives like renewable energy or ecological projects, thus contributing towards a more sustainable future.

Lenovo Sealed Battery Warranty

Long-lasting battery life is not just a feature but a necessity to help you stay productive and connected all day long. Protect your PC's sealed battery from degradation, enjoy hassle-free battery replacement service, and safeguard your PC from future battery failure with our Sealed Battery Warranty Service.

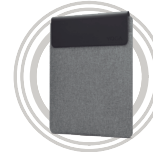
Lenovo Warranty Extensions (Up to 3 Years Duration)

Gain complete peace of mind by extending your base warranty to up to 3 years and minimize unexpected repair costs.

OPTIONS & ACCESSORIES



Lenovo Yoga Slim Mouse



Yoga 16-inch Sleeve



Lenovo TWS YOGA PC Edition

McAfee® LiveSafe™

Register McAfee® to enjoy these benefits in your FREE 30-day trial.

- Award-winning Antivirus
- Password Manager
- Safe Web Browsing
- Multi-device Compatibility
- Identity Theft Protection
- Free Customer Support

* Example of Lenovo catalogue naming convention

Yoga	2-in-1	7	16	ILL	10
Sub-brand	Form Factor	Positioning	Screen Size	Platform Code	Generation

Intel® platform codes

Gemini Lake: IGM, Whiskey Lake: IWL, Icelake: IIL, Gemini Lake: IGL, Comet Lake: IML, Tiger Lake: ITL, Alder Lake: IAP, Alderlake-HX: IAX, AlderLake-U15: IAU, AlderLake-P28/U15: IAL, AlderLake-H45: IAH, Alderlake N: IAN, Raptorlake-PX: IRP, Raptorlake-H: IRH, Raptorlake-HX: IRX, Alderlake-M U9: IAM, Raptorlake U: IRU, Meteorlake P: IMP, Raptorlake-P: IRP, Raptorlake-P28/U15: IRL, Meteor Lake-H: IMH, Lunar Lake: ILL.

WWW.LENOVO.COM

Lenovo reserves the right to alter product offerings and specifications at any time, without notice. Lenovo makes every effort to ensure accuracy of all information but is not liable or responsible for any editorial, photographic or typographic errors. All images are for illustration purposes only. For full Lenovo product, service and warranty specifications visit www.lenovo.com. Lenovo makes no representations or warranties regarding third party products or services. Trademarks: The following are trademarks or registered trademarks of Lenovo: Lenovo, the Lenovo logo, ideapad, IdeaCentre, yoga and yoga home. Microsoft, Windows and Vista are registered trademarks of Microsoft Corporation. Intel, the Intel logo, Intel Inside, Intel Core, and Core Inside are trademarks of Intel Corporation in the U.S. and/or other countries. Other company, product and service names may be trademarks or service marks of others. Visit www.lenovo.com/lenovo/us/en/safecomp/ periodically for the latest information on safe and effective computing.

©2025 Lenovo. All rights reserved.



Lenovo